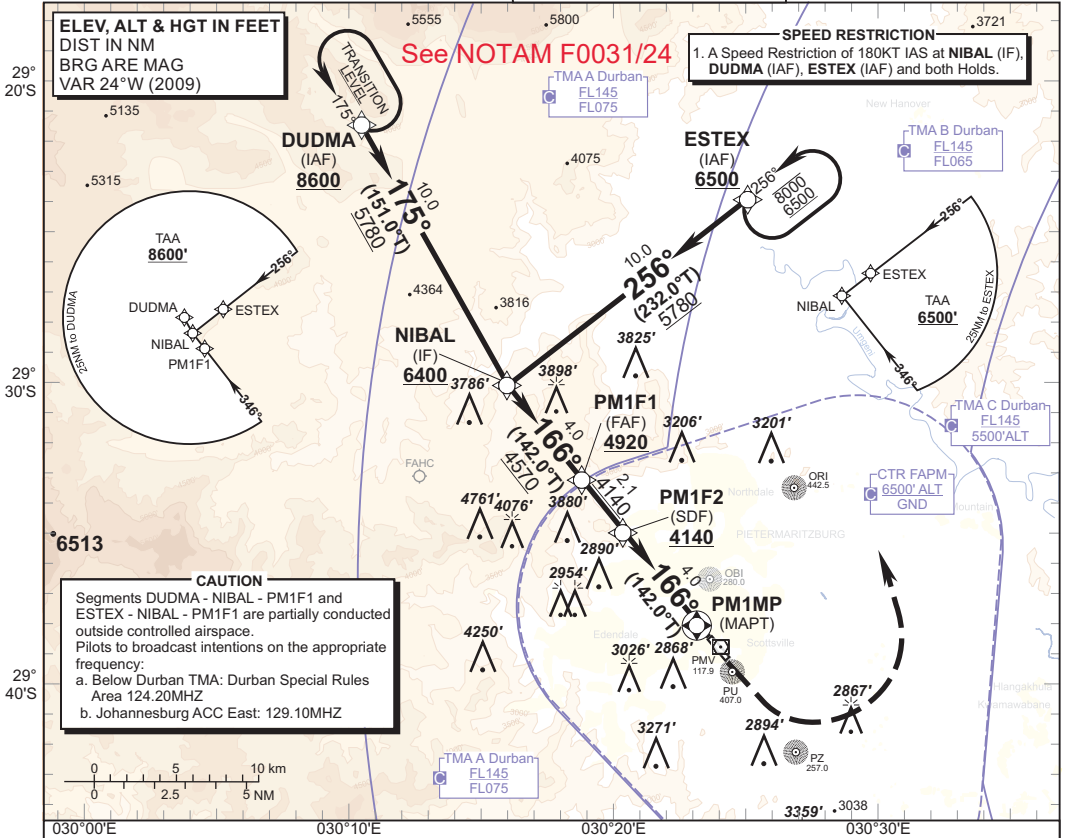


**INSTRUMENT AERODROME ELEV 2423'**  
**APPROACH CHART**  
 HEIGHTS RELATED TO  
**THR RWY 16 - ELEV 2351'**

PIETERMARITZBURG TWR 122.00  
 DURBAN APP 125.75

**PIETERMARITZBURG**  
**RNAV (GNSS) RWY 16**  
 CAT A - C



**ELEV, ALT & HGT IN FEET**  
 DIST IN NM  
 BRG ARE MAG  
 VAR 24°W (2009)

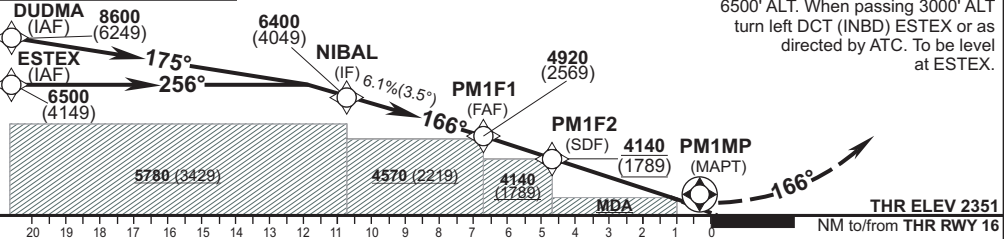
**SPEED RESTRICTION**  
 1. A Speed Restriction of 180KT IAS at NIBAL (IF),  
 DUDMA (IAF), ESTEX (IAF) and both Holds.

**CAUTION**  
 Segments DUDMA - NIBAL - PM1F1 and  
 ESTEX - NIBAL - PM1F1 are partially conducted  
 outside controlled airspace.  
 Pilots to broadcast intentions on the appropriate  
 frequency:  
 a. Below Durban TMA: Durban Special Rules  
 Area 124.20MHZ  
 b. Johannesburg ACC East: 129.10MHZ

DIST (NM) to THR 16	10.8 (IF)	9.8	8.8	7.8	6.8 (FAF)	5.7	4.7	3.7	2.7	1.7	0.7(MAPT)
DIST (NM) to Next WPT	NIBAL	3.0	2.0	1.0	2.1(PM1F1)	1.0	4.0(PM1F2)	3.0	2.0	1.0	PM1MP
ADVISORY ALT	6400	6030	5660	5290	4920	4510	4140	3770	3400	3030	MDA

**TRANSITION ALT 8500**  
**TRANSITION LEVEL ATC**

**MISSED APPROACH:**  
 Maintain track 166°M, and climb to  
 6500' ALT. When passing 3000' ALT  
 turn left DCT (INBD) ESTEX or as  
 directed by ATC. To be level at  
 ESTEX.



CHANGE: CAUTION Block only

		OCA (H)	A	B	C	C/RVR	GS	KT	70	100	120	140	160	
Straight-In Approach	AREA QNH	Without SDF	2.5% MDA(H) 4140(1789)	4140(1789)	4140(1789)	2000	PM1F1 to THR 16	M:S	5:48	4:03	3:23	2:54	2:32	
		With SDF	2.5% MDA(H) 4140(1789)	4140(1789)	4140(1789)	2000		Rate of descent	FPM	435	622	746	870	994
	LNVA	FAPM QNH	Without SDF	2.5% MDA(H) 2780(429)	2780(429)	2810(459)	2000	GS	KT	100	120	150	180	210
			With SDF	3.5% MDA(H) 2730(379)	2730(379)	2770(419)	1800		FPM	254	304	380	456	532
Circling	RVR	5.0% MDA(H)	2660(309)	2660(309)	2710(359)	1800	2.5% Missed APCH Climb Gradient	FPM	355	426	532	638	745	
			1500	1500			3.5% Missed APCH Climb Gradient	FPM	507	608	760	912	1064	
Circling		HGT Related to AD ELEV	3500(1077)	3500(1077)	3800(1377)		5.0% Missed APCH Climb Gradient	FPM						

EFF: 20 JUN 19